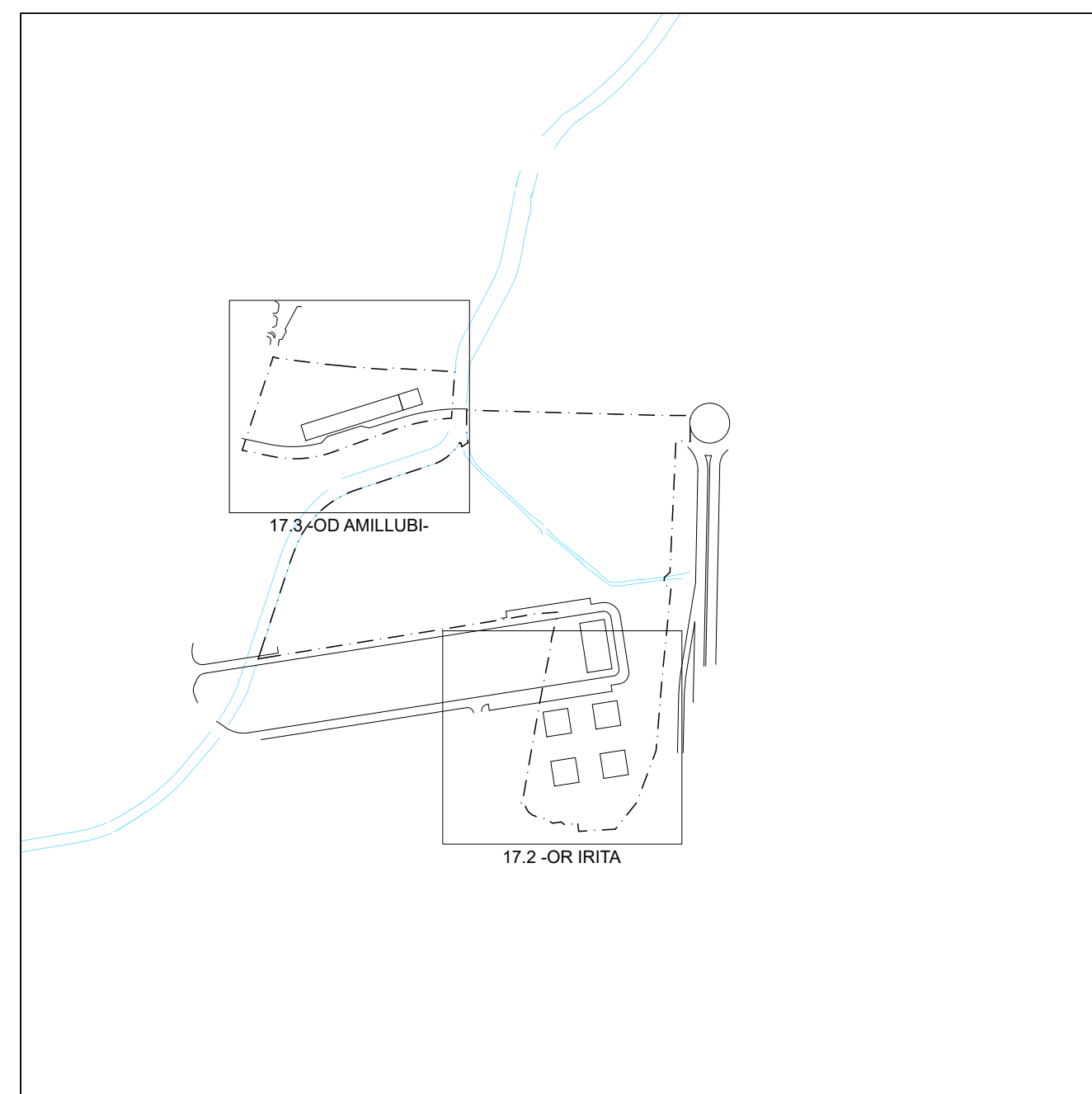


"17.2 -OR IRITA-" AREA [] | ÁREA "17.2 -OR IRITA-"
 "17.3 -OD AMILLUBI-" AREA [] | ÁREA "17.3 -OD AMILLUBI-"



"17.2 ANTOLAMENDU GERORATUKO ESPARRUA -OR IRITA-"
 "17.3 ANTOLAMENDU DEFINITUKO ESPARRUA -OD AMILLUBI-"
 EREMUEI BURUZKO ZARAUZKO HIRI ANTOLAMENDUKO PLAN OROKORRAREN ALDAKETA

MODIFICACIÓN DEL PLAN GENERAL DE ORDENACIÓN URBANA DE ZARAUZ REFERENTE A LA ÁREAS "17.2 ÁMBITO DE ORDENACIÓN REMITIDA -OR IRITA-" "17.3 ÁMBITO DE ORDENACIÓN DEFINIDA -OD AMILLUBI-"

TESTU BATEGINA 2024ko OTSAILA
 TEXTO REFUNDIDO FEBRERO 2024

II. PROIEKTU PLANOAK 2. ANTOLAMENDU XEHATUA
II.2.3 PLANOAK
 DEFINIZIO GEOMETRIKOA ANTOLAMENDUA ATALAK
 1:1.000 ESKALA

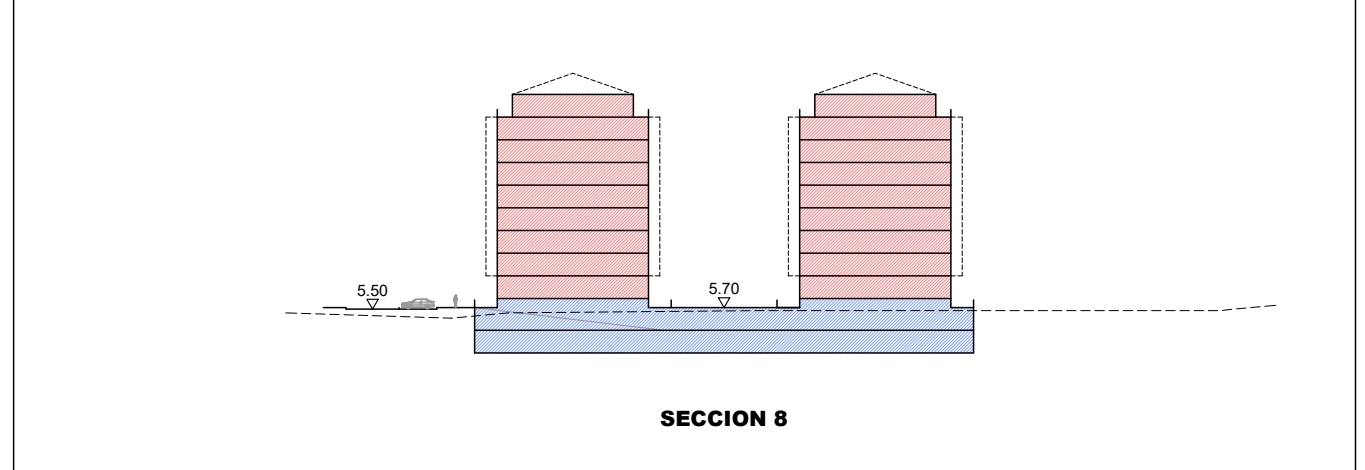
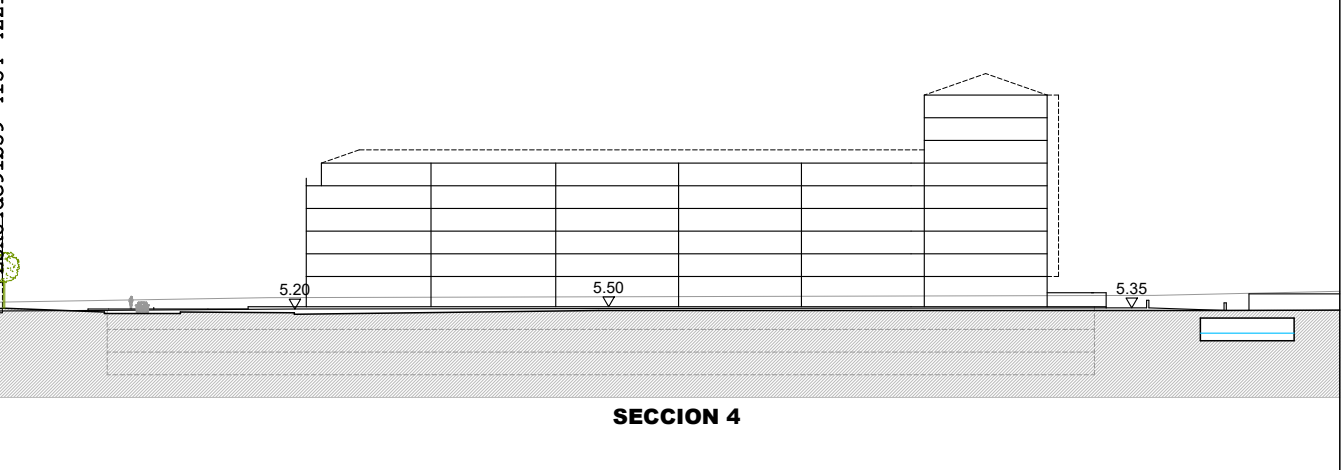
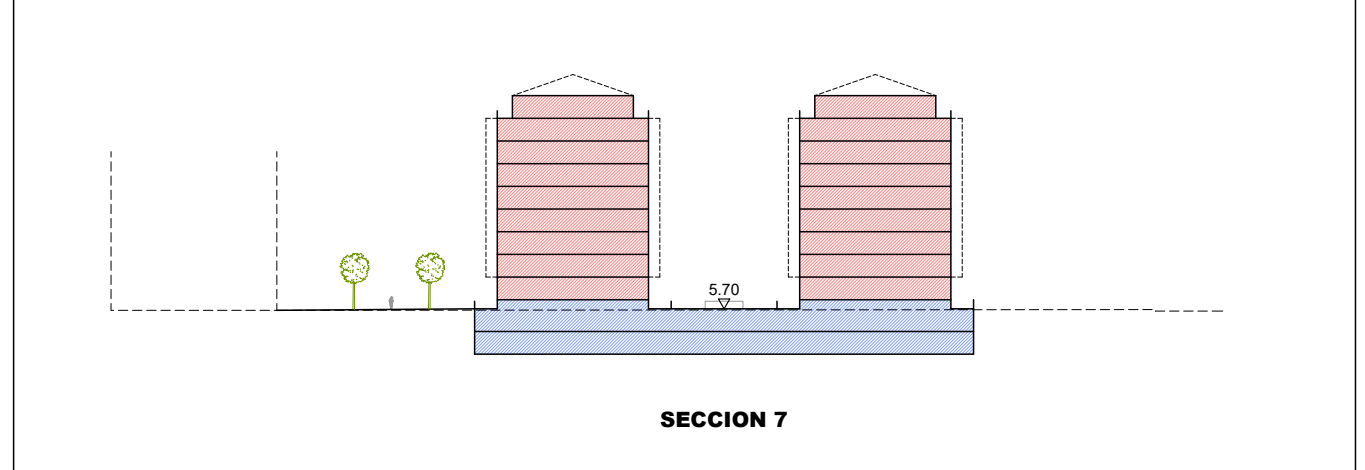
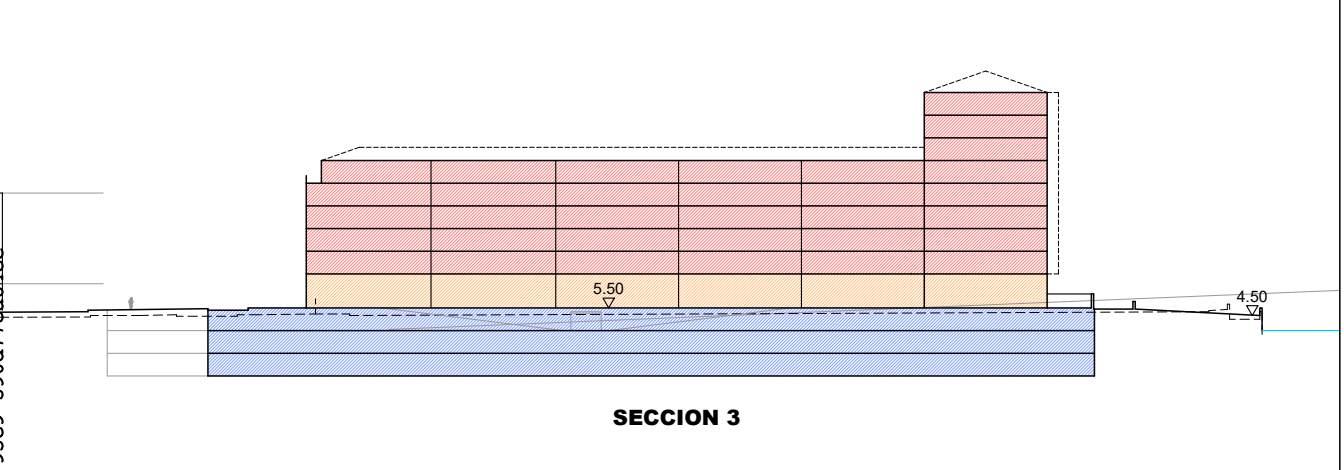
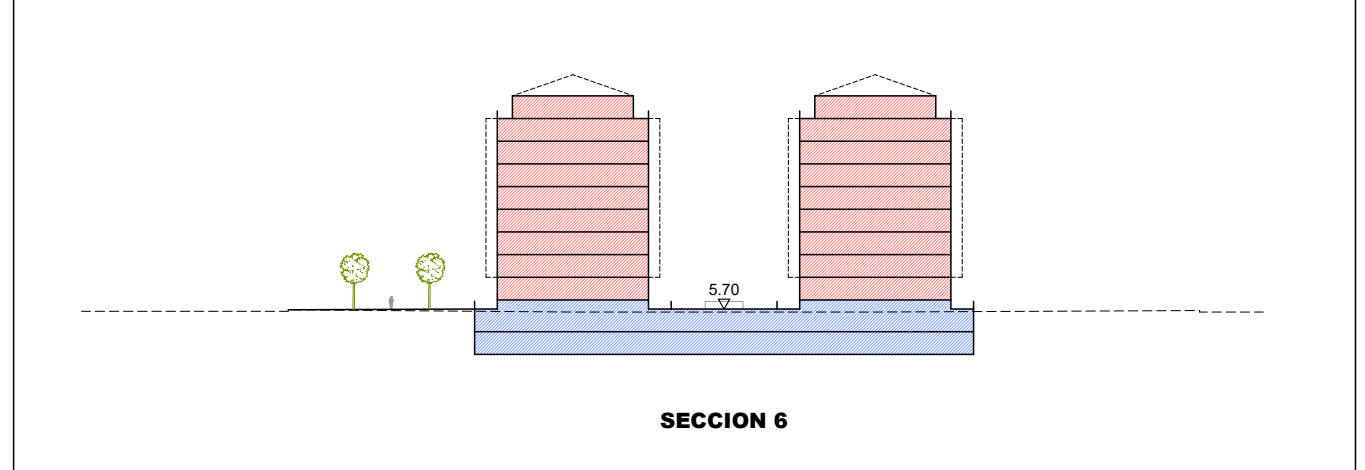
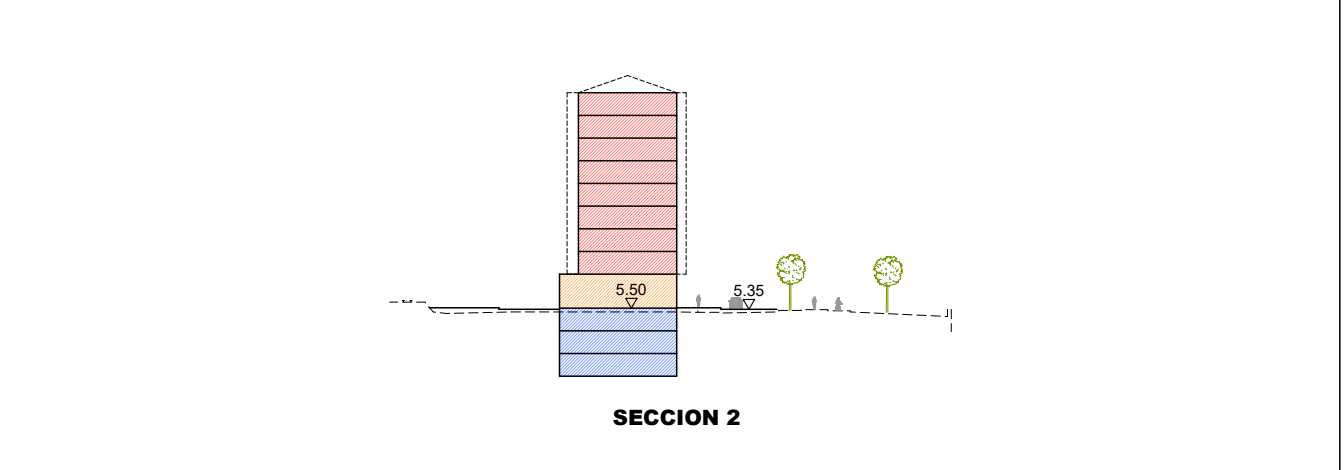
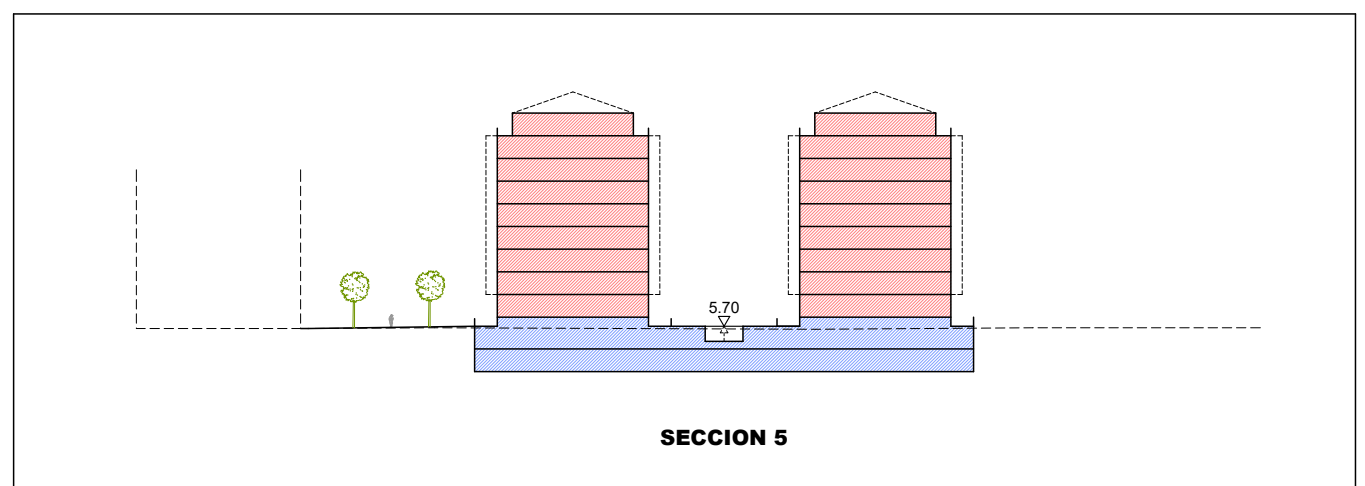
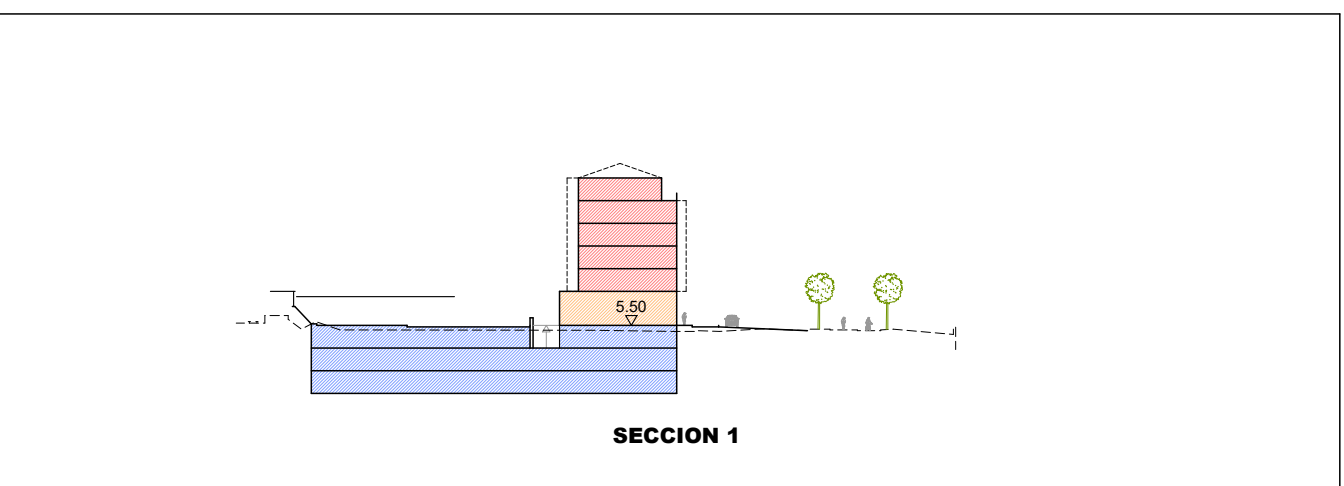
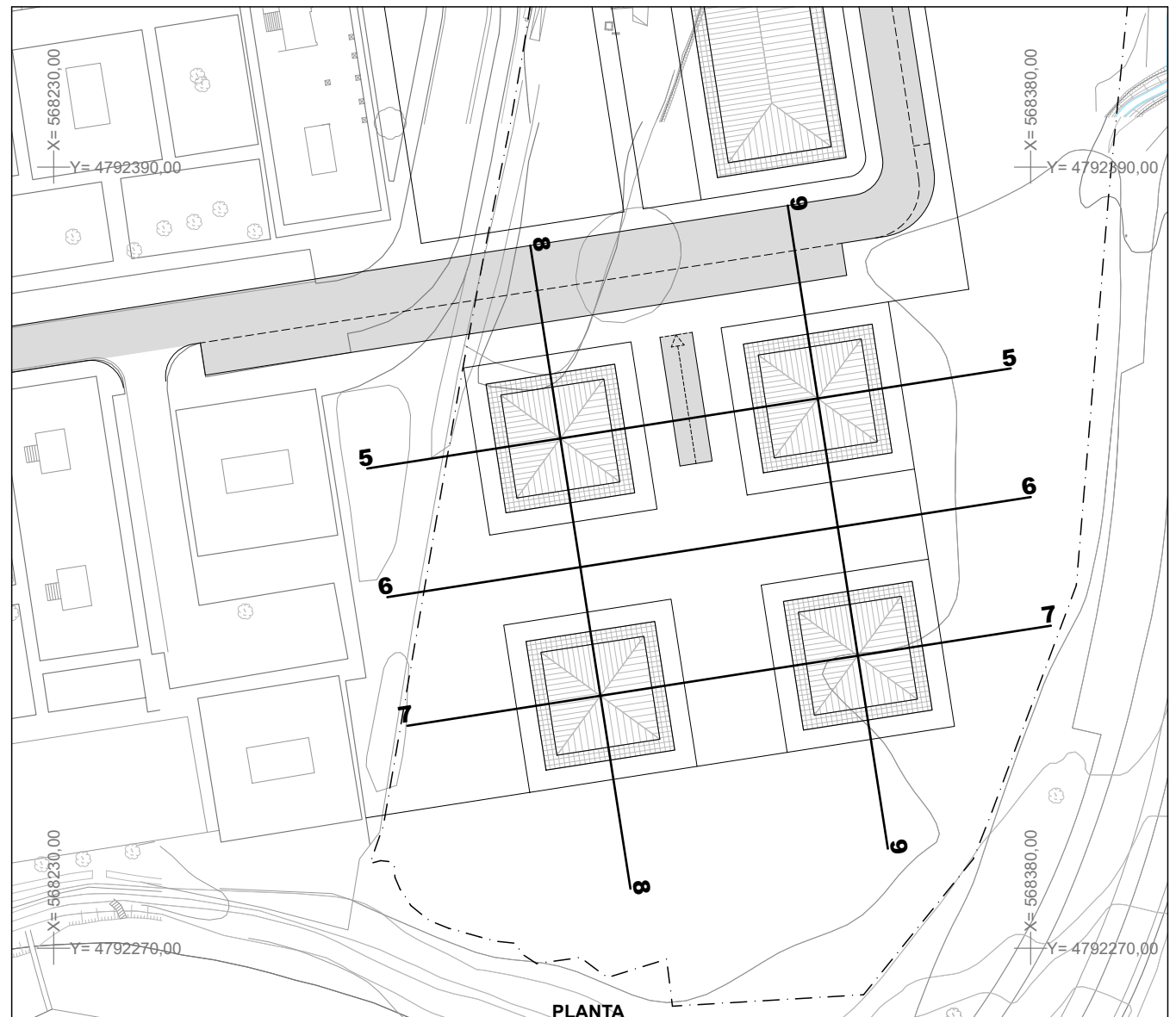
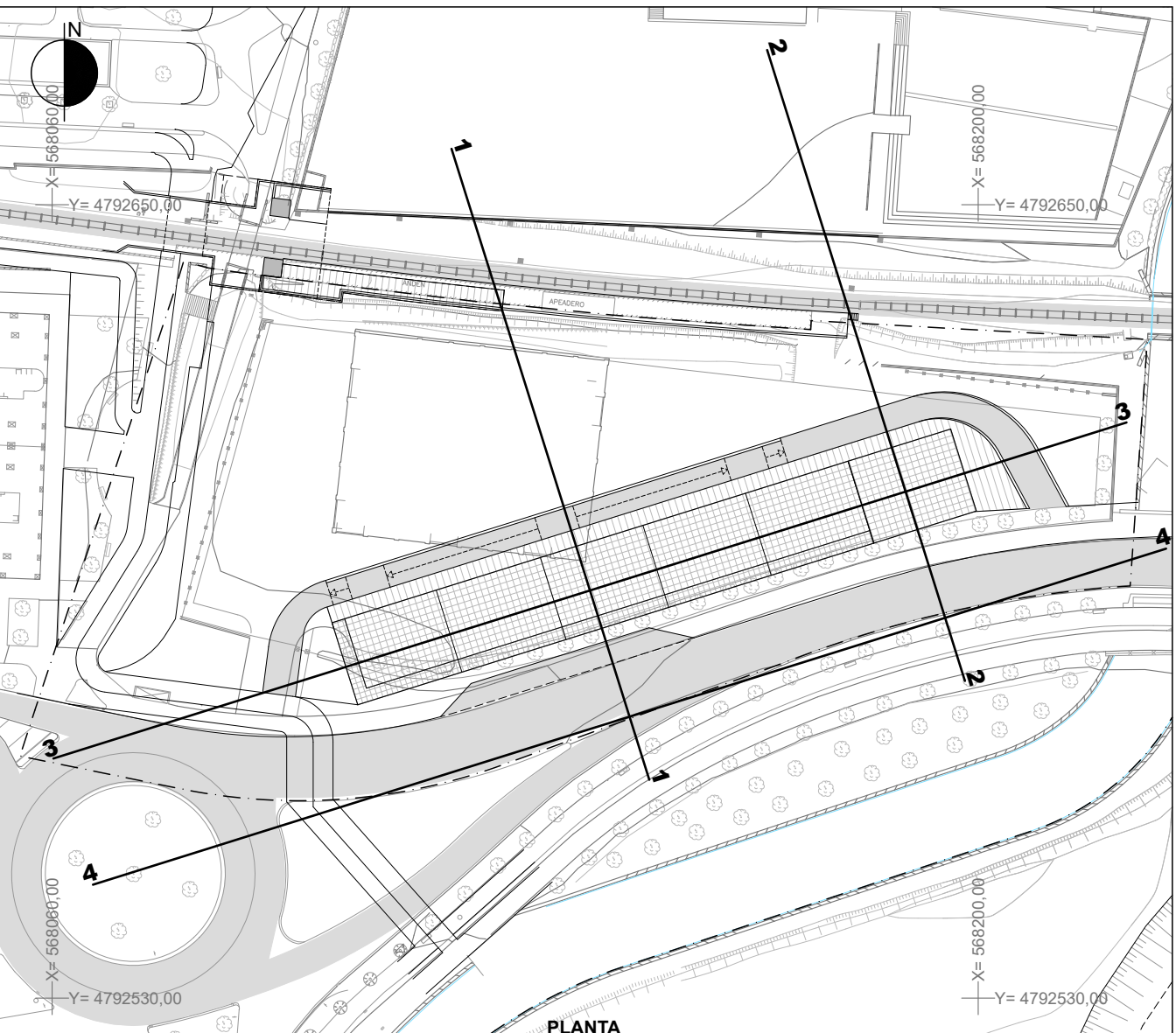
II. PLANOS DE PROYECTO 2. ORDENACIÓN PORMENORIZADA
PLANO II.2.3
 DEFINICIÓN GEOMÉTRICA DE LA ORDENACIÓN SECCIONES
 ESCALA 1:1.000

IDAZLE TALDEA: SANTIAGO PEÑALBA GARMENDIA, Arquitecto. MIKEL IRIONDO ITURRIOZ, Abogado.

REDACTORES: [Signatures]

SUSTATZAILA: [Signature]

PROMOTOR: ZARAUZKO UDALA



E:02144691b59-4f54-4221-93e9-590677ca44ae